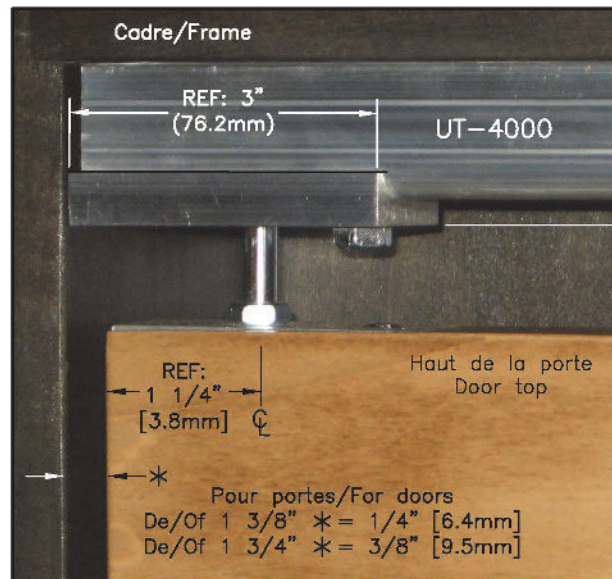


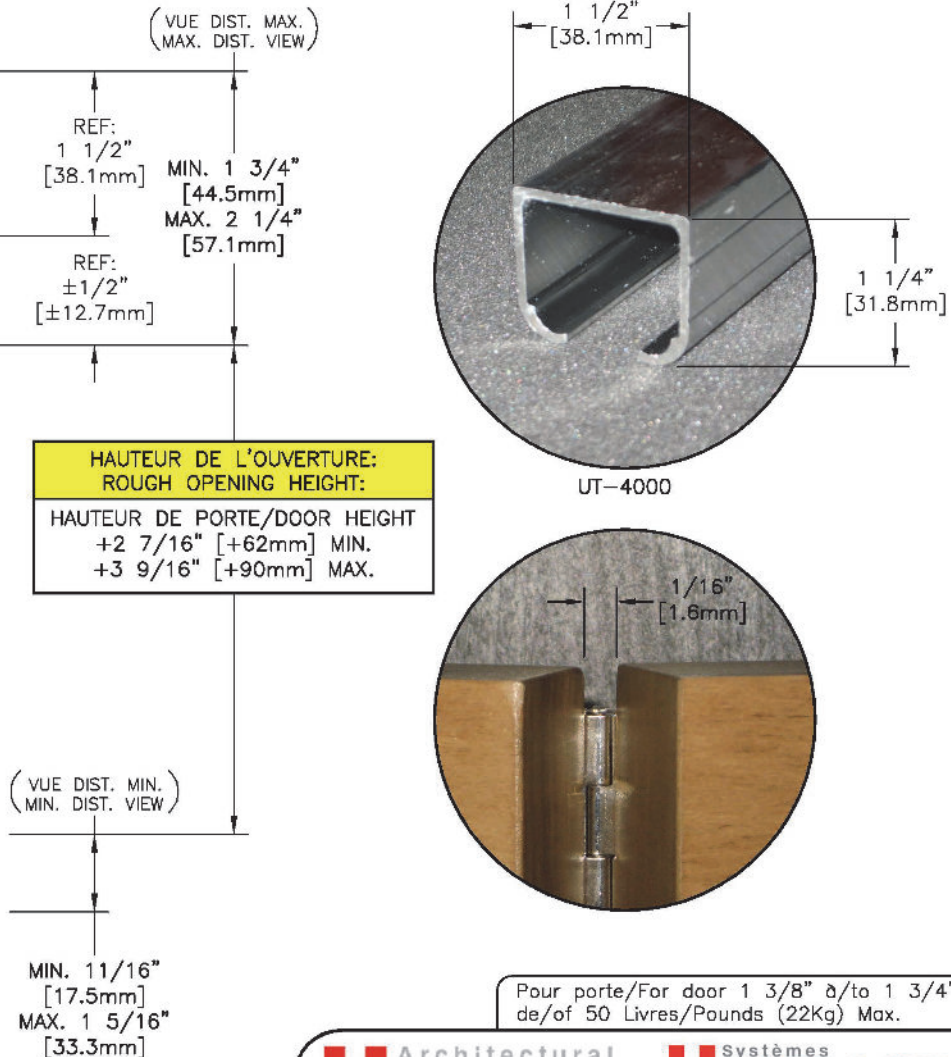
# Fiche technique UT-4000 / Technical sheet UT-4000

<b>Application</b>	Résidentielle, Institutionnelle, Commerciale et Industrielle Residential, Institutional, Commercial and Industrial
<b>Usage</b>	Moyen — Medium duty
<b>Norme / Standard</b>	Conforme—Complies with ANSI/BHMA A156.14 Grade 1



PORTES PLIANTES / BI-FOLDING DOORS

**NOTE**  
 POUR ENSEMBLE DE PORTES à 4 PANNEAUX  
 COMPTER 1/8" [3.2mm] ENTRE LES 2 SECTIONS  
 FOR SET OF 4 PANEL DOORS  
 ALLOW 1/8" [3.2mm] BETWEEN THE 2 SECTIONS



Architectural  
**UNIQUE**




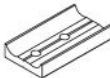
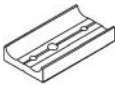





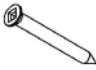


Votre satisfaction, notre fierté!

Tél.: 514 351-5454 / Fax: 514 351-5554  
 uniqueproduitarchitectural.com

Systèmes  
**UNITRACK**  
 Systems  
**UT-4000**

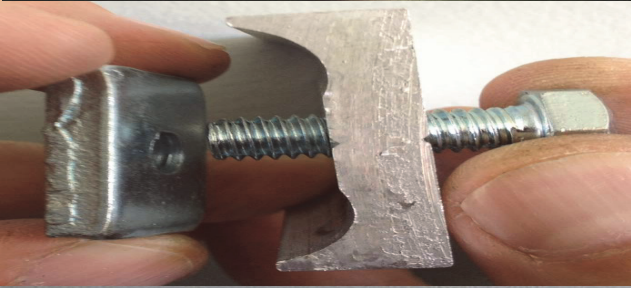
Dessin de référence drawing

DESIGN / DRAWING No: REF-UT4000  
 DATE: 16/05/2014  
 PAGE: 1/1

Liste des pièces ensemble UT-4000 / Parts list UT-4000		
Nom / Name	Image / Picture	Qté / Qty
Rail UT-4000 track		1
Chariot UT-4010 hanger		1
Plaque de fixation à angle Fixing plate		3
Plaque pivot du haut à 2 trous 2-Hole bottom pivot plate		1
Plaque pivot du bas à 3 trous 3-Hole top pivot plate		1
Pivot du haut Top pivot		1
Pivot du bas Bottom pivot		1
Écrou carré 5/16" square nut		1
Boulon hexagonal 5/16" HEX nut		1
Écrou 5/16" nut		3
Vis tête plate #10x1-1/2" Flathead screw		6
Vis #10x1-1/4" Screw		2
Vis #8x3/4" Screw		6



1-Cut rail 1/8" LESS than the TOTAL opening width.



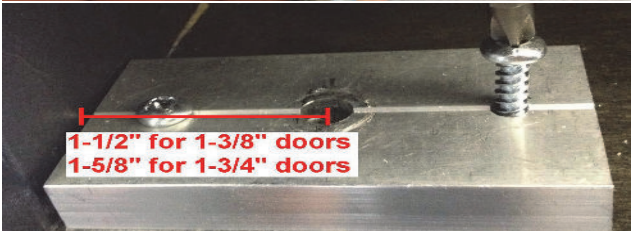
2-Insert the 5/16" hex bolt into the 2-hole top pivot plate. Screw the 5/16" square nut onto the hex bolt and insert into rail UT-4000.



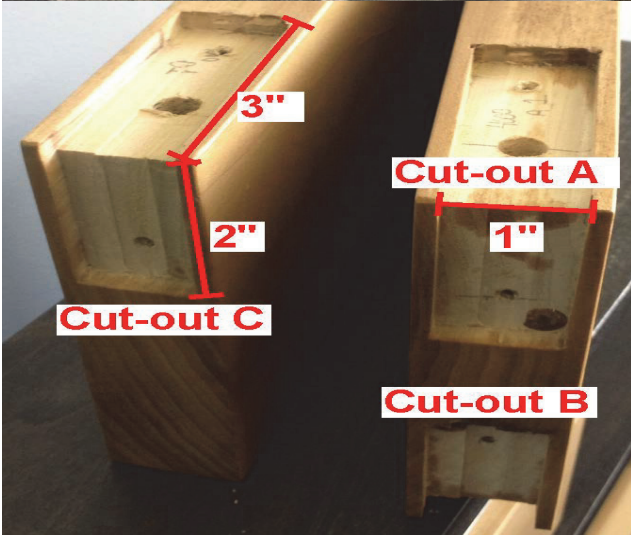
3-Slide the hanger UT-4010 into the rail on the opposite end from the top pivot inserted in step 2.



4-Screw the rail into the opening's header.



5-Screw the 3-hole bottom pivot to the floor using #10 x 1-1/4" screws. For 1-3/8" doors, the centre of the hole for the pivot should be at 1-1/2" from the wall and for 1-3/4" doors, it should be at 1-5/8" from the wall.



6-Using a router, make the required cut-outs (A, B and C) 1/4" deep, so as to install fixing plates. See image for details.

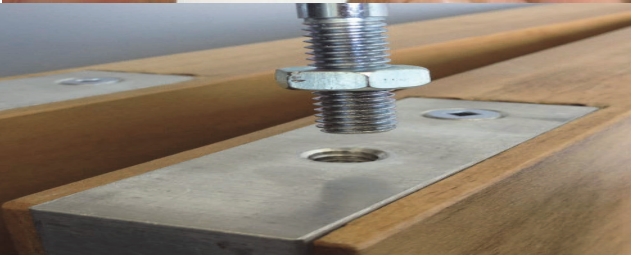
7-Drill 3/8" diameter holes at least 1" deep at 1-1/4" from the original edge of the door to allow installation of the pivots and hanger bolt. See image for details.



8-Insert fixing plates into the cut-outs, drill 1/8" diameter holes and fix using #10 x 1-1/2" screws.



9-Screw 5/16" nut onto top pivot



10-Screw top pivot into fixing plate in cut-out A.



11-Screw 5/16" nut onto bottom pivot. Screw bottom pivot into fixing plate in cut-out B.



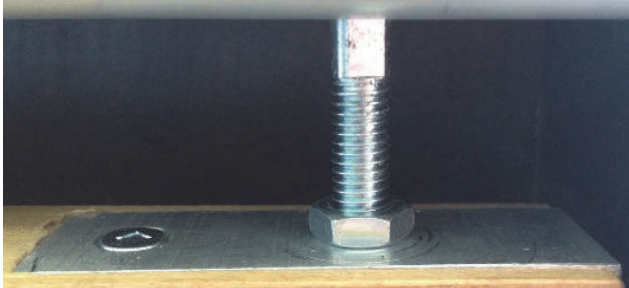
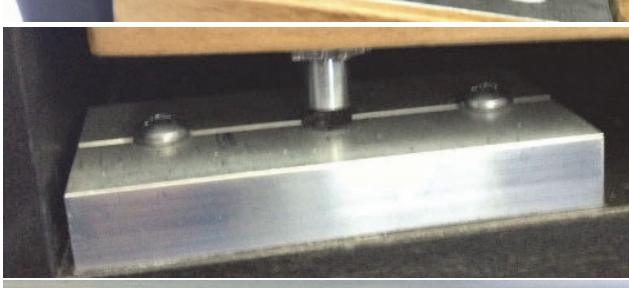
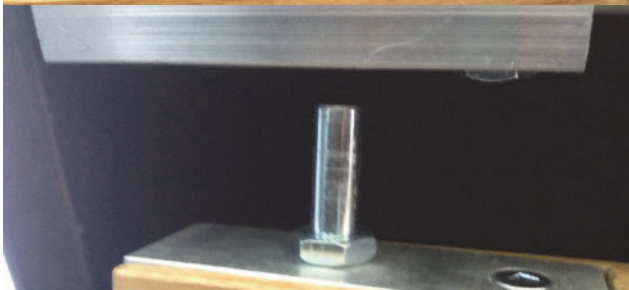
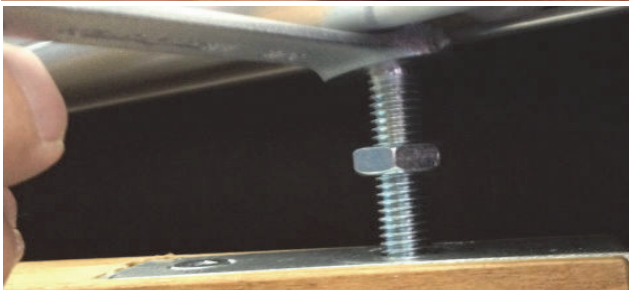
12-At this stage, the hinge (supplied by others) should be attached to the door. Screw 5/16" nut onto the hanger bolt.



13-Lift door and screw the hanger bolt into the fixing plate in cut-out C.

14-Insert the top and bottom pivots into their respective plates.

15-Adjust the level of the door by screwing or unscrewing the bottom pivot as well as the hanger bolt. The door is adjusted correctly once the hanger guides the door along the rail. The hanger SHOULD NOT support the door. Tighten the 5/16" nuts against the fixing plates.



Parts list for UT-4000 series

Name	Picture	Quantity
Rail UT-4000		1
Hanger UT-4010		1
Fixing plate		3
2-Hole top pivot plate		1
3-Hole bottom pivot plate		1
Top pivot		1
Bottom pivot		1
5/16" square nut		1
5/16" HEX bolt		1
5/16" Nut		3
Flathead screw #10x1-1/2"		6
Screw #10x1-1/4"		2
Screw #8x3/4"		6

HAUTEUR DE L'OUVERTURE:  
ROUGH OPENING HEIGHT:

HAUTEUR DE PORTE/DOOR HEIGHT  
+2 7/16" [+62mm] MIN.  
+3 9/16" [+90mm] MAX.